



**art creation**  
QUALITY FROM HOLLAND SINCE 1899

## Musician with trumpet GOUACHE

### What you need

- Talens Art Creation gouache set 8 x 12 ml
- Talens Art Creation gouache brushes, for example polyester brush set consisting of various brushes
- Paper
- Charcoal
- Kneadable eraser to fade any lines or rub them out completely
- Jar of water for thinning paint and for cleaning brushes during and after painting
- Tear-off palette

### Tips

- The painting comprises many colours. These colours have been created by mixing the colours of the set together. A useful tip is to first practise a little with mixing colours on a piece of paper. In this way you can develop your own colours. The example would also become increasingly more your own painting.
- Before you start, go through all the stages.

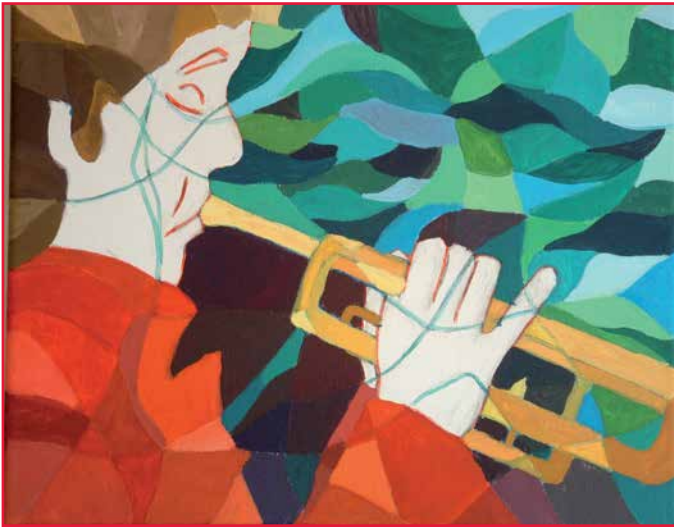


### STEP 1:

Lightly divide the area into sections with charcoal. Draw the musician over it. Trace the lines with thinned paint. Use the colours light blue (cyan), dark pink (magenta) and dark green.

**STEP 2:**

Paint each section a different colour. For the hair use yellow ochre, burnt umber, yellow lemon and white. Mix these colours for various shades of brown and yellow. Paint the coat red. Make various shades of red by mixing yellow ochre, yellow lemon, dark pink and white. A darker colour can be obtained using dark pink, dark green and burnt umber for the background. Thin the paint with a little water.

**STEP 3:**

Paint the background using the colours light blue, dark green, yellow ochre and white. Mix the colours to create various tints. If required you can add sections. Paint the trumpet using yellow lemon, dark pink, yellow ochre and white. Mix these colours to create various tints.

**STEP 4:**

Paint the face and hand using several tints of white, for example burnt umber mixed with white, dark pink with white, yellow lemon with white. Gouache is an opaque paint; the colour is intense enough after having painted two layers.